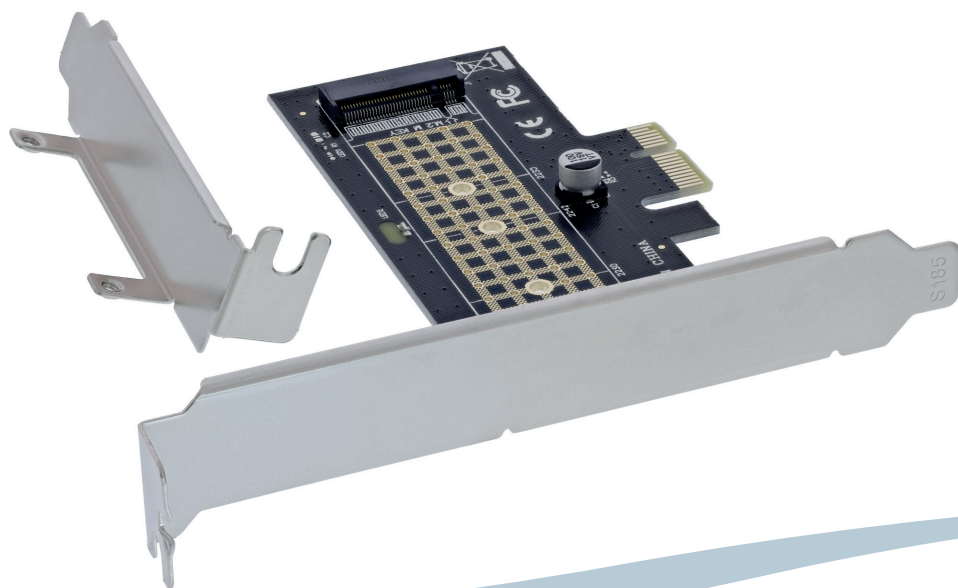


INLINE® PCI EXPRESS CARD

to 1x internal NVMe M.2 Key M, PCIe x1



- Supports an NVMe SSD (M.2 Key M) for compact high-performance storage solutions
- PCIe 3.0 x1 interface with up to 1 Gb/s effective bandwidth
- Automatic lane detection on boot for easy system integration
- LED indicator for displaying read and write activities
- No additional driver required – native support by Windows and Linux

The InLine® PCI Express card expands your system with an internal NVMe M.2 slot, which enables the connection of an M.2 SSD (Key M). Thanks to the PCIe 3.0 x1 interface with up to 1 Gb/s transfer rate, the card is ideal for systems that require additional fast storage space.

The automatic lane detection during boot ensures optimal integration into the system. The M.2 SSD is powered directly via the PCIe bus (3.3 V), and an LED indicator provides information about the current operating and activity status.

Technical data:

- Bus type & PCIe: PCIe 3.0 x1 (operational in x1, x4, x8 and x16 slots)
- Connection – interfaces:
 - 1 x M.2 slot (Key M) for NVMe SSDs
 - Supported module sizes: 2230, 2242, 2260, 2280
- Dimension: 95 mm x 52 mm (PCIe board)
- Data rate: Maximum approx. 1 Gb/s

Operating conditions:

- Operating temperature: -40 °C to +85 °C

Features:

- Automatic detection of the lane configuration during booting
- Onboard LED indicator (1x read/write activity LED)
- The M.2 NVMe SSD draws its power supply directly from the PCIe bus (3.3 V)
- No additional driver required

System requirements - Hardware:

- PC with one free PCIe slot (x1, x4, x8 or x16)
- Motherboard that supports PCIe 3.0 or higher

Operating system support:

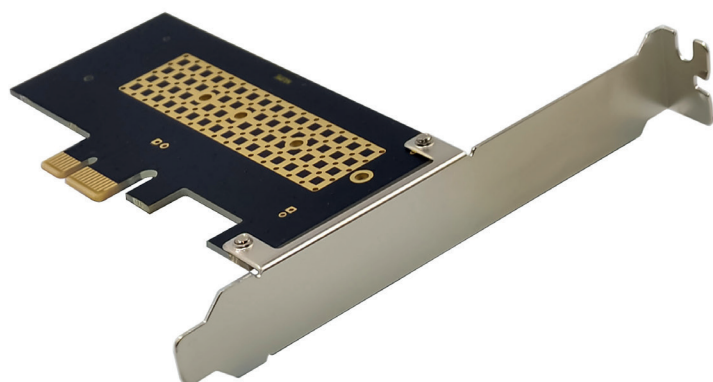
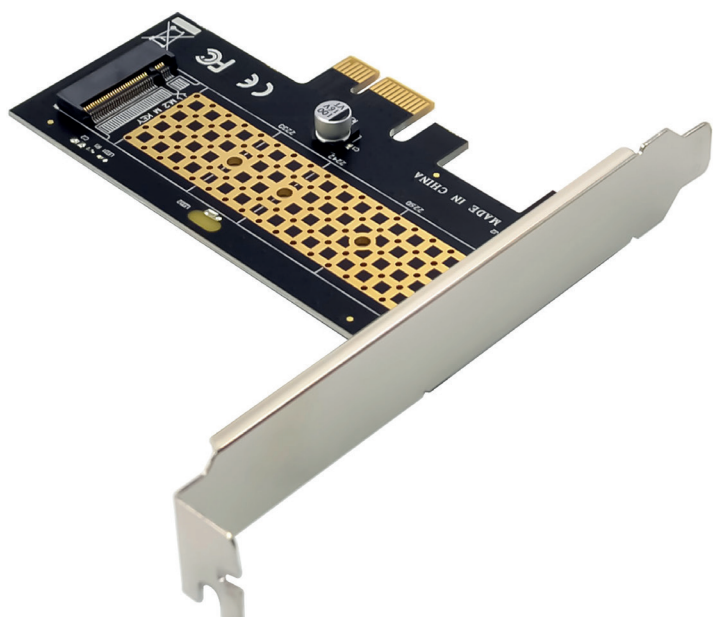
- Windows: 11, 10, 8, 8.1
- Windows Server: 2012 R2
- Linux: Native support (Fedora, SUSE, Ubuntu, Red Hat)

Scope of delivery:

- 1 x InLine® PCI Express card to 1x internal NVMe M.2
- 1 x low-profile slot bracket
- 1 x hand screwdriver
- 2 x screws
- 1 x heat conduction pad
- 1 x instruction manual (German/English)

Technical Data	
Article height:	2.1 cm
Article length:	11.5 cm
Article width:	12 cm
Connections external:	None
Connections internal:	M.2-NVMe-SSD
Interface:	NVMe
Low Profile:	Yes
RAID:	No
Slot:	PCIe
Transmission rate:	1 Gb/s
Type:	Controller
Type of packaging:	InLine® Header with Euro perforation

Item No.	Interface	EAN
76660S	NVMe	4043718341559



If you have any further questions, please contact marketing@inline-info.com

www.inline-info.com/en/

Disclaimer

InLine® is a brand of INTOS ELECTRONIC AG | Siemensstraße 11 | D-35394 Gießen

Documentation © 2025 INTOS ELECTRONIC AG

All rights reserved. No part of this document may be reproduced in any form or by any means, electronic, mechanical or chemical, without the prior written permission of the publisher. It is possible that this document may still contain typographical faults or misprints.

However, the information in this document will be checked regularly and corrections will be made in the next edition. We accept no liability for errors of a technical or printing nature and their consequences. All trademarks and industrial property rights are acknowledged. Changes in the sense of technical progress can be made without prior notice. Our products, including packaging, are not toys, they may contain small parts and sharp objects.

Please keep away from children.