

USER MANUAL

InLine® Magnetic smartphone tripod

VALIDITY:

This user manual applies to the following product:

- 48091 InLine® Magnetic smartphone tripod, for MagSafe, universal clamps, selfie stick up to 150 cm, with Bluetooth remote control

CONTENT OF DELIVERY

- 1x InLine® Magnetic smartphone tripod
- 1x Bluetooth remote control
- 1x Button battery: CR1632/120 mAh
- 1x instruction manual (German/English)

Please check the content of delivery for completeness. If individual components are missing, please contact your dealer.

EXPLANATION OF WARNING SYMBOLS AND



This symbol indicates information that contributes to a better understanding.

NOTES

FEATURES / SPECIFICATIONS

- Colour: black
- Bluetooth version: 5.0
- Width tripod: 330 mm
- Dimension of the magnetic surface: 56x44x2.2 mm
- Max. extension height: 1500 mm
- Smartphone attachment: 50-88 mm
- Material: ABS plastic/polycarbonate/aluminium
- Weight: 363 g

INTENDED USE

This magnetic tripod from InLine is suitable for video and photo shoots with a smartphone. It can be held in the hand as a stick and makes it easier to hold the

camera steady without shaking. The stick can also be used to adjust the perspective and viewing angle. Alternatively, the product can also be used as a smartphone tripod for professional photography and videography, for example for time-lapse photography. To use the tripod function, open the tripod by pressing lightly on the triangle under the stick. The tripod can be extended telescopically up to 150cm.

This tripod from InLine has two mounting options for your smartphone. Compatible devices can be magnetically attached directly to the holder. The magnet ensures a stable and secure hold. If your smartphone does not support magnetic attachment, you can use the universal clamping device on the holder for attachment. To do this, unfold the clamps and pull them apart. You can then clamp the smartphone in the clamping device. This universal mount is suitable for a device width of 50-88 mm. The detachable Bluetooth remote control allows you to trigger shots wirelessly. This increases your radius of action and makes portrait shots easier.



Note

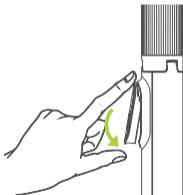
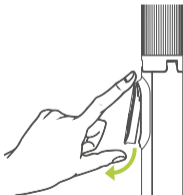
Check the product for any damage, such as cracks in the housing, before use. Do not use the product if there is obvious damage!

OPERATION

1. Remove and insert the remote control

Removal: Press the remote control upwards at the top edge and pull it out at the bottom edge.

Engage: Insert the remote control at the top edge of the recess and then press it carefully downwards until it engages.



2. Establish a Bluetooth connection

Activate the Bluetooth search on your smartphone. Press and hold the BT button on the remote control for 3 seconds. A green LED lights up. Select „InLine-BT-Click“ in the device search. After successful connection, the green LED goes out.



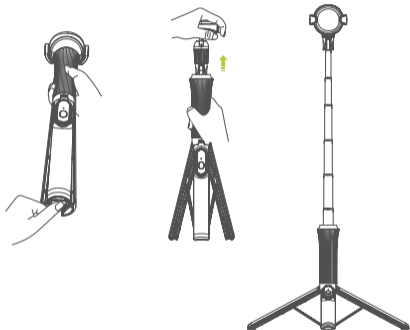
3. Use as a tripod

Opening: Hold the tripod by the ribbed surface with one hand and press the lower triangular button with the other hand until the tripod opens fully.

Adjust: Pull the tripod to the desired height. Use the magnetic head as a grip aid.

Set up: Place the tripod on a stable and level surface.

Note: Do not hold the tripod by the tripod base, otherwise it will not open.



4. Align the magnetic holder

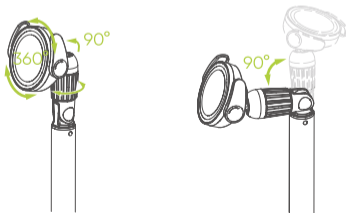
Adjust the position: Turn the ribbed twist lock anti-clockwise to release the ball joint of the magnetic holder.

Rotate: The magnetic holder can be rotated 360°.

Tilt: The mounting head can be tilted 90° in the direction of the remote control.

Fix: Turn the ribbed rotary fixation clockwise to tighten.

Note: Tilting is only possible in the direction of the remote control.

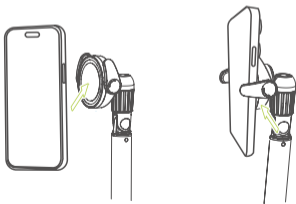


5. Attach smartphone

Magnetic attachment: Compatible devices can be attached directly to the 56x44x2.2 mm magnetic surface of the holder. If your device does not support this function, you can use a magnetic case.

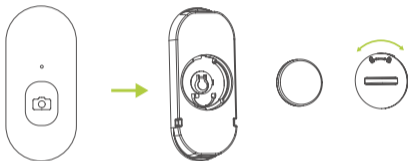
Universal clamp: If your smartphone does not support magnetic attachment, you can use the universal clamp on the holder to attach it. To do this, you need to unfold the clamps and pull them apart. You can then clamp the smartphone in the clamping device. This universal attachment is suitable for a device width of 50-88 mm.

Note: The clamps can only be rotated in one direction.



6. Insert the battery

Open the back of the remote control by turning it anti-clockwise. Insert a CR1632 button battery and close the cover by turning it clockwise.



NON-INTENDED USE

The following is considered improper use in the sense of foreseeable misuse:

- Do not open this product under any circumstances.
- This product is not a toy.
- Do not expose the device to contact with sharp objects, as this can lead to scratches and damage.
- Do not drop the product on the floor. The internal circuits could be damaged.

MAINTENANCE AND CLEANING

- Do not expose the device to liquids, moisture or wetness to avoid damaging the internal circuits of the device.
- Do not use abrasive solvents to clean the product.
- Do not expose the product to extremely high or low temperatures, as this will shorten the service life of electronic devices or deform certain plastic parts.



DISPOSAL

Electrical and electronic devices as well as batteries must not be disposed of with household waste. The consumer is legally obliged to return electrical and electronic equipment and batteries at the end of their service life to the public collection points set up for this purpose or to the point of sale.

SIMPLIFIED EU DECLARATION OF CONFORMITY

The Manufacturer /
Importer:

INTOS ELECTRONIC AG
Siemensstrasse 11
D-35394 Gießen
service@inline-info.com

Owner of the
Trademark:



hereby declares that this InLine® Magnetic smartphone tripod complies with all relevant provisions of the EMC (2014/30/EU), RoHS (2011/65/EU + 2015/863/EU) and RED (2014/53/EU) directives.

The full EU Declaration of Conformity is available at the following web address:

www.inline-info.com/downloadcenter



DISCLAIMER

1st edition English 03 / 2025

Documentation © 2025 INTOS ELECTRONIC AG

All rights reserved. No part of this manual may be reproduced in any form or by any means, electronic, mechanical or chemical, without the prior written permission of the publisher.

It is possible that this manual may still contain typographical faults or misprints. However, the information in this manual will be checked regularly and corrections will be made in the next edition. We accept no liability for errors of a technical or printing nature and their consequences. All trademarks and industrial property rights are acknowledged. Changes in the sense of technical progress can be made without prior notice. Our products, including packaging, are not toys, they may contain small parts and sharp objects.

Please Keep away from children.

